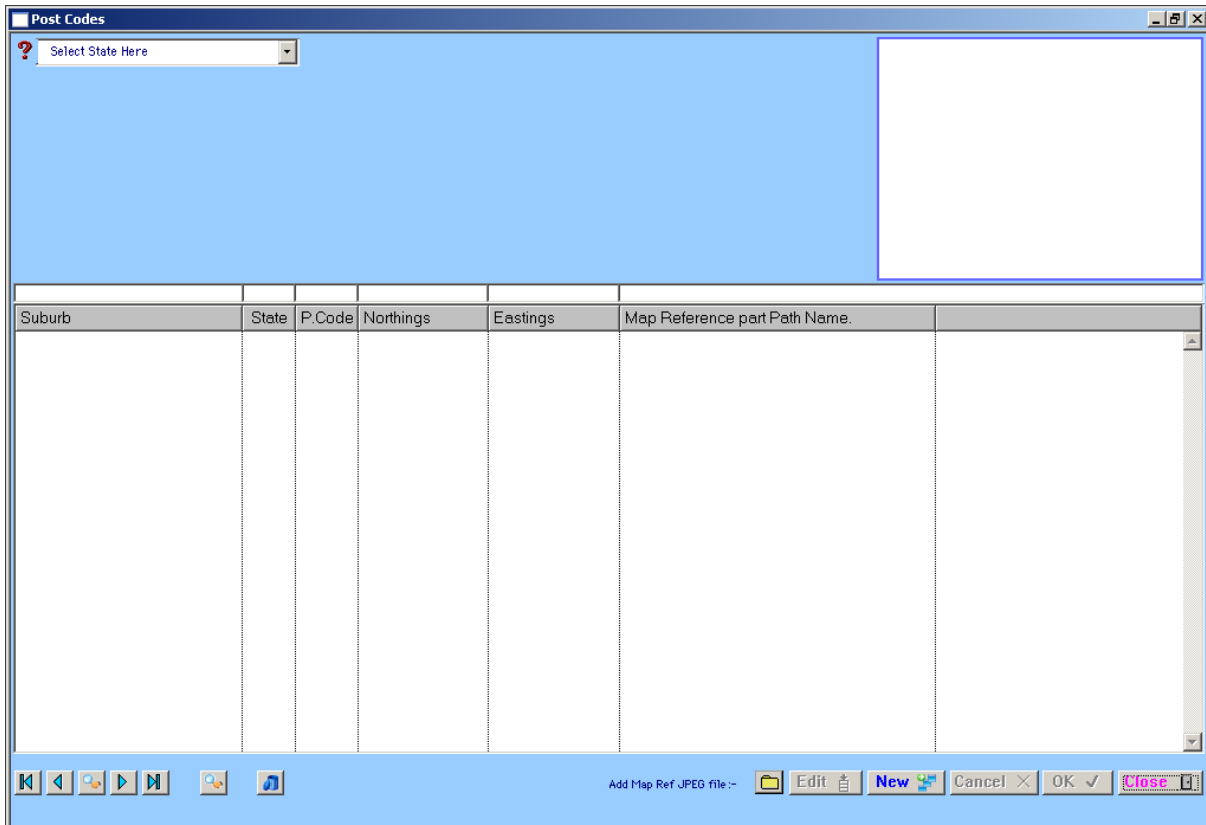


## Category 6

### 6.11 Post Codes



The Post Codes Module has all Post Codes available Australia wide.



To change the Post Codes to the relevant State, click on 'Select State Here'.

To include an additional Post Code, select 'New' and enter Suburb, State and Post Code.



To add a map reference to the Post Code click on 'Add Map Ref Jpeg file'. The following window will appear.

